

**SINGA**

*Ideal for Life Science*

**2023**

Pressure Care Solutions

**MAI-STRESSLESS™**

CHAIR POSITION  
AIR MATTRESS









“

Our philosophy is  
“Helping your life more convenient”.

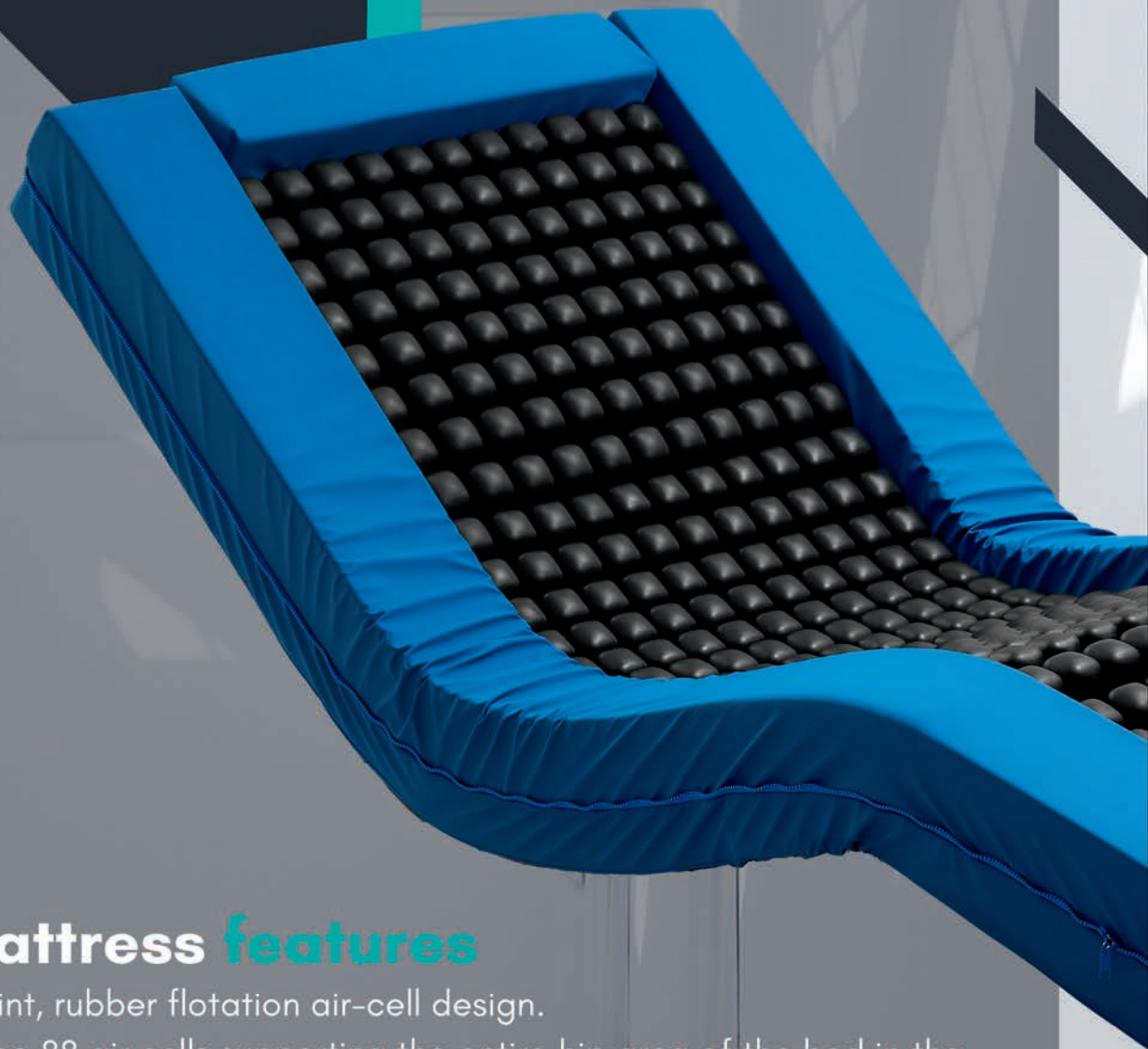
# MAI-STRESSLESS™

## CHAIR POSITION AIR MATTRESS

<b>Model Number</b>	MA90 (Non-powered)
<b>Size</b>	L190 x W90 x H25 cm (+/-5 cm)
<b>Bottom Sheets</b>	PU/ NY210D
<b>Mattress</b>	4 sets of 88 flotation CR air cells
	3 sets of non-powered self-adjusting one-way air-cooling modules
	Pressure relief bottom layer
	Pressure relief sidewall
	2 sections alternating (88 flotation CR air cells for a single section)
<b>Mattress Cover</b>	Waterproof 5,000 mm/H <sub>2</sub> O (JIS L1092-B)
	Breathable 500 g/m <sup>2</sup> (ASTM E 96/E 96M (38 C))
	In accordance with CAL 117 fire retardant standard
	In accordance with ISO 22196 antibacterial
	Coating Strength 0.78 Kg/2.5cm (JIS L1089)
	PU+75D Polyester knit fabric (4-way stretch)
<b>Mai.air™ pump</b>	Air output : $\geq$ 8LPM
	Alternating : A,B,C 3 sections
	Cycle time: 5 , 10 , 20 Selectable
	Regulator :20~250 kg for patient's weight
	Power cord: 3 m kg
	Weight :3.4 kg
	Size : L260xW125xH170mm
	Note:LED display+ Static function+Auto- firm function+ Low pressure +Power failure+ Selector failureaudio-visual alarm + Quick connector



# Features



## Air mattress features

A multi-point, rubber flotation air-cell design.

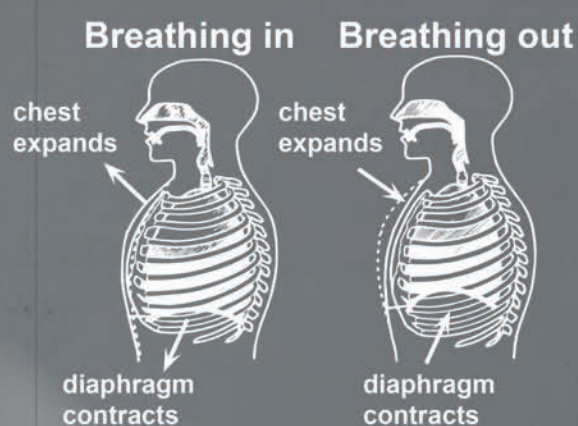
There will be 88 air cells supporting the entire hip area of the bed in the chair position and 176 air cells supporting the back areas, which is different from the traditional cell mattress that has only 4 tubes supporting the hip in the sitting position.

In the sitting position, the traditional cell mattress tends to have insufficient decompression of the buttocks and slides the user forward, causing excessive and inappropriate use of the waist muscles.

For long-term bedridden patients, apart from the 8 hours of night sleep, it is recommended to be in a sitting position for the rest 16 hours of daycare. Compared with full bed rest, sitting recuperation has the following advantages:

## With the help of **gravity**

The movement of the diaphragm in a sitting position during chest and abdominal breathing will use less effort and energy than lying in bed.



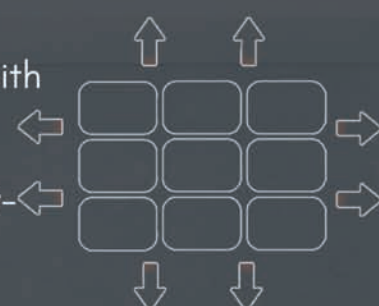


### Moisture vapor management:

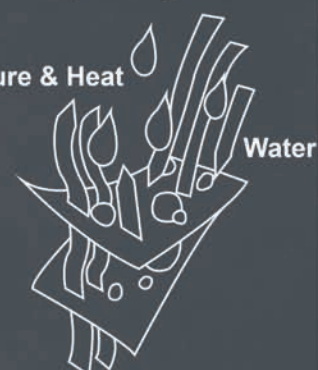
The waterproof, two-way stretch, low-shear bed sheets with a breathable standard 500g/c\m2 (ASTM 96/E 96M (38 degrees C) applied.

Carried 3 sets of non-powered self-adjusting one-way air-cooling modules

The air chambers are square spheres, moisture vapor ventilated and dissipated in four directions; the distance between the cooling channels is 8mm.



Moisture & Heat



### Cleaning, hygiene & infection control:

PU environment-friendly, two-way stretch, waterproof, breathable bed sheet applied.

The zipper combines the bottom of the mattress and the cover; the lapped zipper design prevents human waste and body fluids from infiltrating the compartment during nursing.

### Safety and Stability:

CPR board, CPR valve, auto-firm function, high-density hidden guardrails on both sides, fire retardant standard conforming to CAL117.

### Comfort and heat management:

Low noise and micro-vibration pump with sleep mode selectable, inflation time 18 seconds every 10 minutes only, and working noise level lower than 30 dB.

Low-pressure detection module (optional)

MP5 cervical adjustable anti-snore pillow (optional)

Equipped with three sets of non-powered self-adjusting one-way air-cooling modules.



### Shear reduction:

The high elasticity neoprene-made air cells can be stretched more than five times the single sphere area.

Apply with a waterproof, breathable, two-way stretch, low-shear force bed sheet.



# SINGA

*Ideal for Life Science*



SINGA TECHNOLOGY CORPORATION

No.35, Keji 1st Rd., Guishan Dist., Taoyuan City 33383, Taiwan

TEL: +886-3-328-8328

FAX: +886-3-327-1400